



Board of Education Update September 2017



Site Plan Update – W.C. Petty



Wight

Wight & Company
wightco.com
2500 North Frontage Road
Darien, IL 60551
P 630.949.7000
F 630.949.7979

ANTIOCH SCHOOL DISTRICT 34
964 SPAFFORD STREET
ANTIOCH, IL 60002
(847) 838-8400
(847) 838-8404

NOV 15, 2017 11:40:33 AM
REV. DESCRIPTION DATE

**W.C. PETTY
ELEMENTARY SCHOOL**

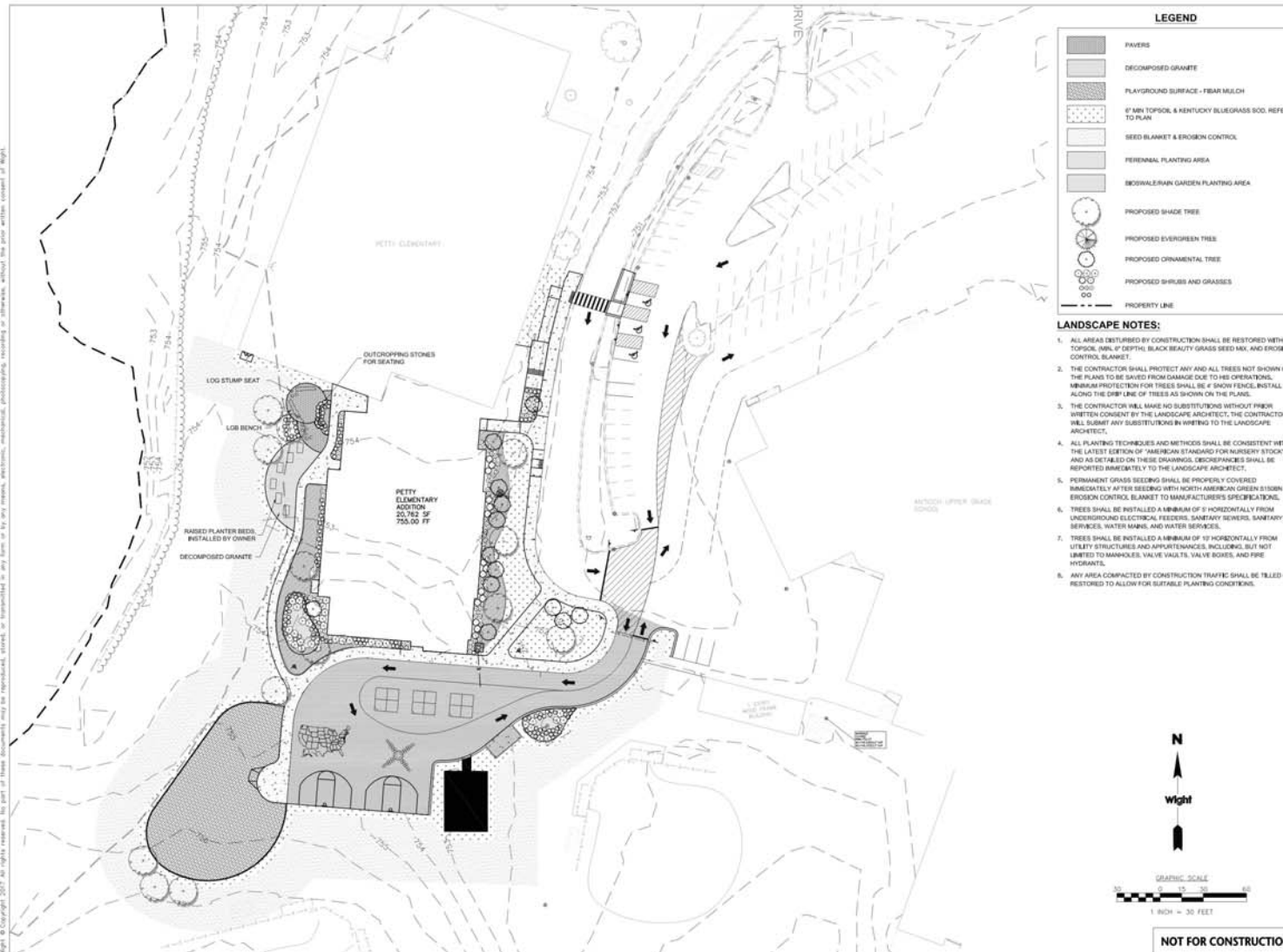
850 HIGHMEY DRIVE
ANTIOCH, IL 60002

SITE PLAN

Project Number:
5407-24
Drawn By:
JSP
Sheet:

C2.00

S:\Dwain\Antioch School District 34\5409-29 Additions & Repairs\DWAIN\DWAIN\100 LANDSCAPE PLAN.dwg (rev01) Sep 15, 2017 12:00:36 pm
 Wight & Company 2017 All rights reserved. No part of these documents may be reproduced, stored, or transmitted in any form or by any means, electronic, mechanical, photocopying, recording or otherwise, without the prior written consent of Wight.



Wight
 Wight & Company
 wightco.com
 2500 North Frontage Road
 Darien, IL 60551
 P 630.969.7000
 F 630.969.7979

ANTIOCH SCHOOL DISTRICT 34
 964 SPAFFORD STREET
 ANTIOCH, IL 60002
 (847) 838-8400
 (847) 838-8404

100% CD: 04/15/17
 REV: DESCRIPTION DATE
**W.C. PETTY
 ELEMENTARY SCHOOL**

850 HIGHVIEW DRIVE
 ANTIOCH, IL 60002

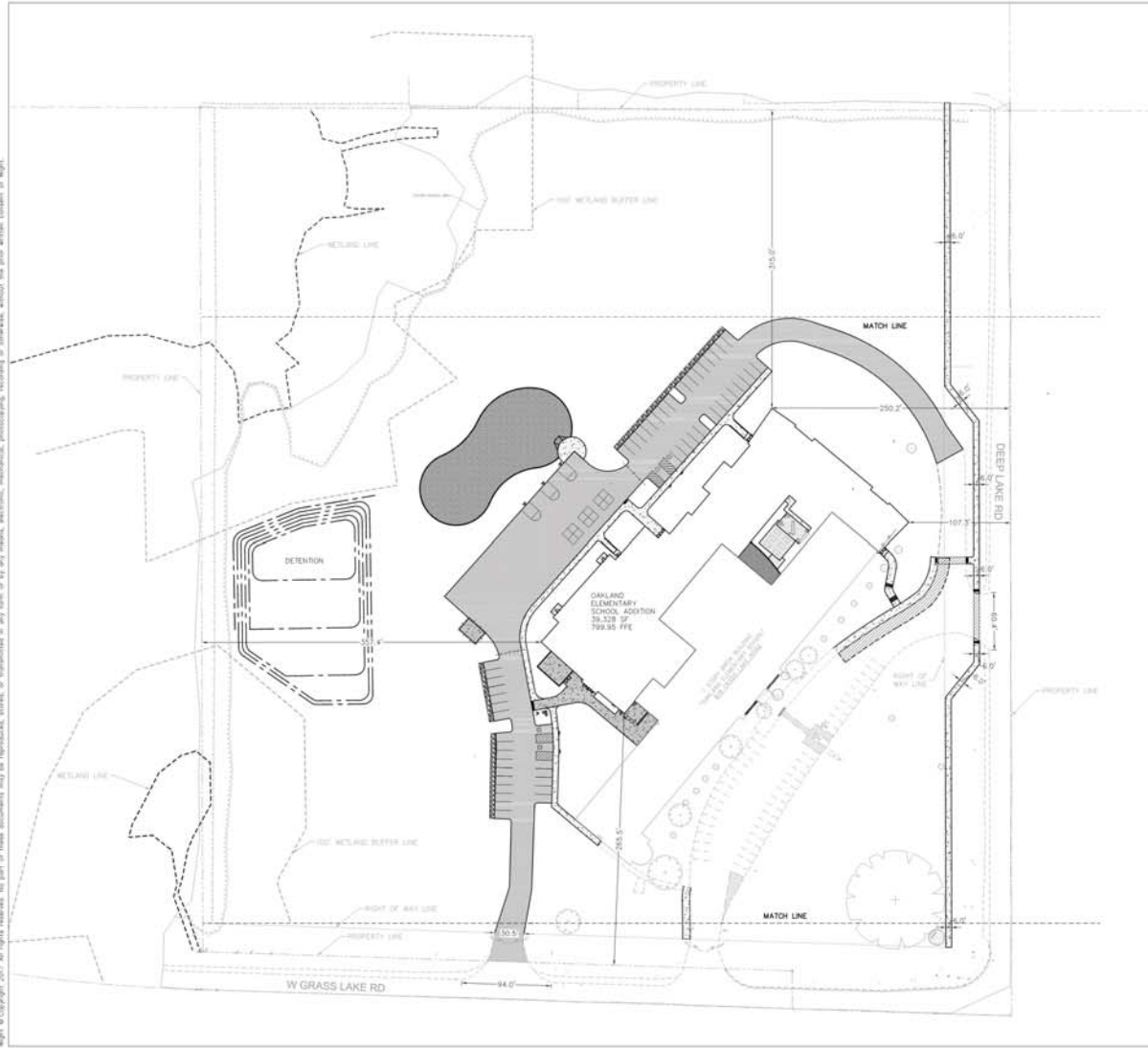
LANDSCAPE PLAN

Project Number:
 5409-29
 Drawn By:
 LR
 Sheet:

L1.00

Site Plan Update – Oakland

S:\Darien\Antioch School District\34\5409-29_Additions & Renovations\01\DWG\Oakland\CD\02.00 SITE PLAN.dwg (revise: Sep 15, 2017 10:54:58 am)
Wight & Company 2017. All rights reserved. No part of these documents may be reproduced, stored, or transmitted in any form or by any means, electronic, mechanical, photographic, recording or otherwise, without the prior written consent of Wight.

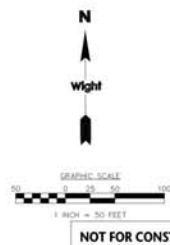


LEGEND

[Pattern]	FULL DEPTH HMA PAVEMENT
[Pattern]	RECOMPACT EXISTING AGGREGATE, NEW HMA PAVEMENT ONLY
[Pattern]	HEAVY DUTY CONCRETE
[Pattern]	CONCRETE/SIDEWALK
[Pattern]	MULCH PLAYGROUND
[Pattern]	RAIN GARDEN
[Pattern]	INFILTRATION TRENCH

SITE DATA SUMMARY

ITEM	QUANTITY
EXISTING PAVEMENT AREA	4.9 AC.
NEW PAVEMENT AREA	0.95 AC.
EXISTING PARKING (ENTIRE SITE)	60 SPACES 2 ADA SPACES 62 TOTAL SPACES
REQUIRED PARKING PER CODE (NUMBER OF STAFF + 1/2 NUMBER OF CLASSROOMS)	NO STAFF + 1/2 OF 31 CLASSROOMS = 46 SPACES
PROPOSED PARKING (ENTIRE SITE)	96 SPACES 4 ADA SPACES 100 TOTAL SPACES



NOT FOR CONSTRUCTION

ANTIOCH SCHOOL DISTRICT 34

Wight
Wight & Company
wightco.com
2500 North Frontage Road
Darien, IL 60541
P 630.969.7900
F 630.969.7979

ANTIOCH SCHOOL DISTRICT 34
964 SPAFFORD STREET
ANTIOCH, IL 60002
(847) 838-8400
(847) 838-8404

NOV 01	04/05/17	
REV	DESCRIPTION	DATE

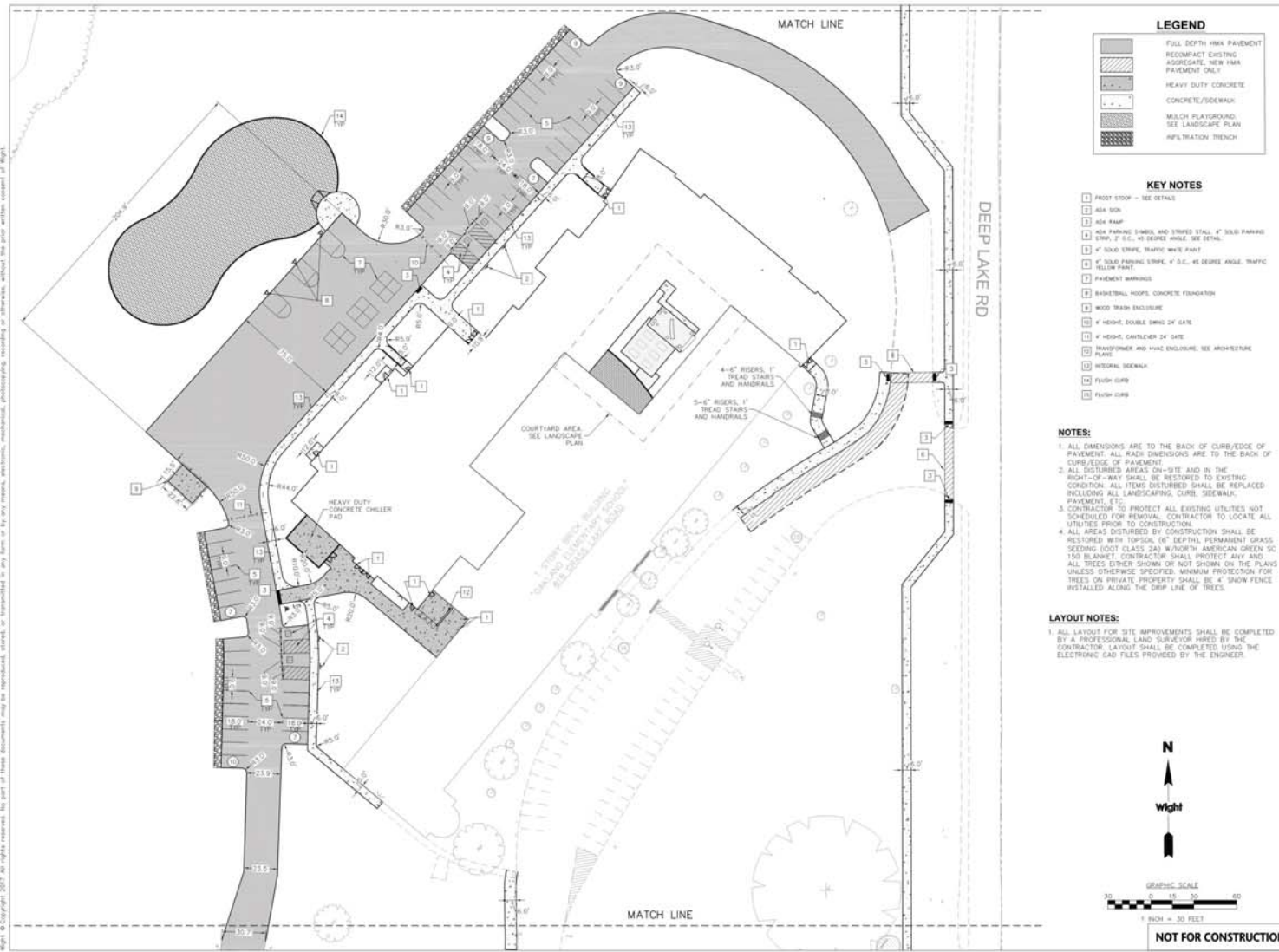
**OAKLAND
ELEMENTARY SCHOOL**

818 GRASS LAKE ROAD
LAKE VILLA, IL 60046

OVERALL SITE PLAN

Project Number:	5407-24
Drawn By:	
Sheet:	C2.00

S:\Darien\Antioch School District\34\School\34\5409-29_Additions & Renovations\GIS\DWG\Oakland\CD\2.01 SITE PLAN.dwg (PLOT) Sep 15, 2017 10:50:29 am
 Wight & Company 2017. All rights reserved. No part of these documents may be reproduced, stored, or transmitted in any form or by any means, electronic, mechanical, photocopying, recording or otherwise, without the prior written consent of Wight.



ANTIOCH SCHOOL DISTRICT 34

Wight & Company
 wightco.com
 2500 North Frontage Road
 Darien, IL 60561
 P 630.969.7900
 F 630.969.7979

ANTIOCH SCHOOL DISTRICT 34
964 SPAFFORD STREET
ANTIOCH, IL 60002
(847) 838-8400
(847) 838-8404

NOV 01 04/15/17

REV DESCRIPTION DATE

OAKLAND ELEMENTARY SCHOOL

818 GRASS LAKE ROAD
 LAKE VILLA, IL 60046

SITE PLAN

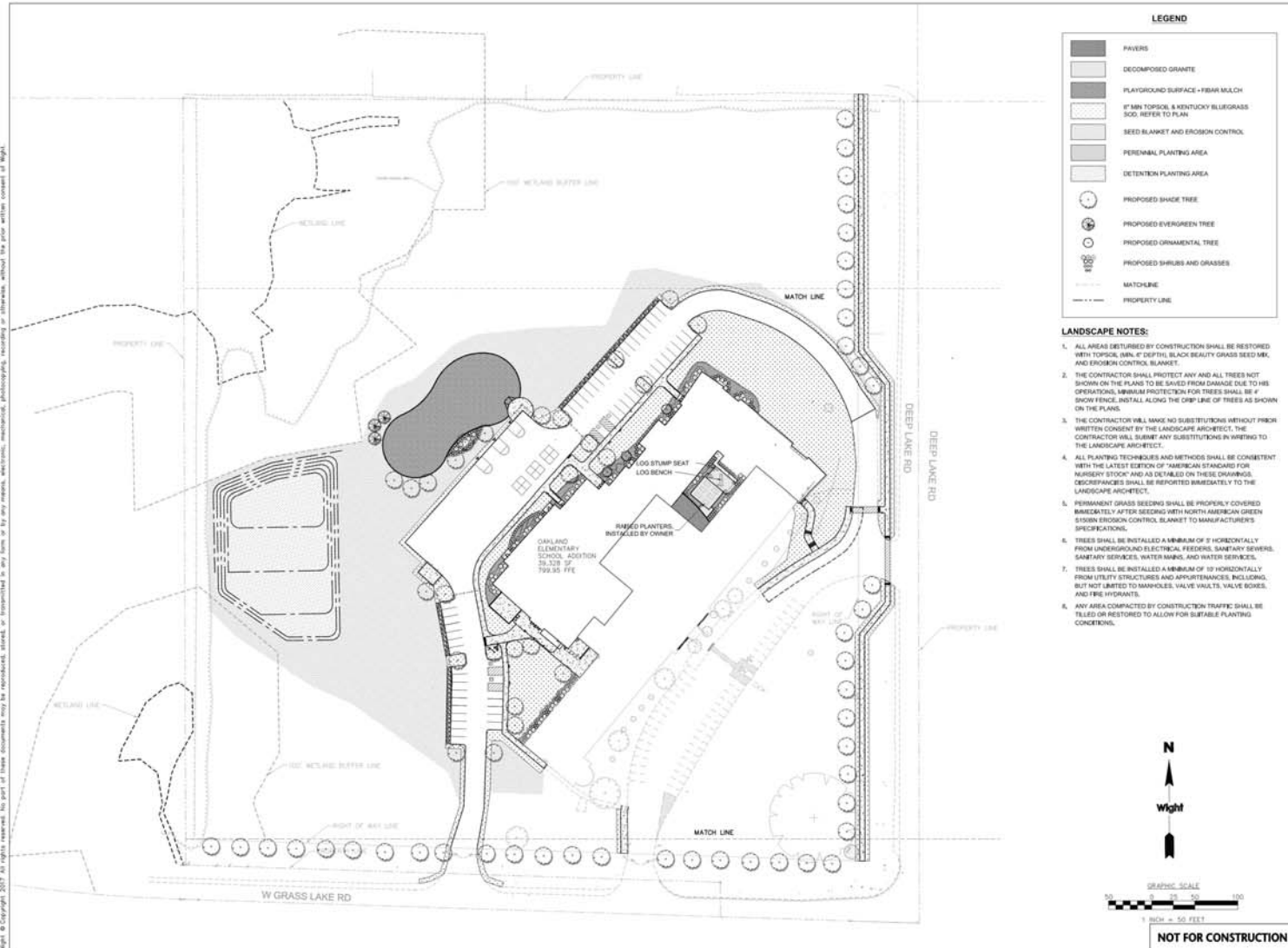
Project Number:
 5409-29

Drawn By:

Sheet:

C2.01

S:\Darien\Antioch School District 34\409-29_Additions & Renovations\01\DWG\Oakland\CD\L1.00 LANDSCAPE PLAN.dwg (rev. 2017 10-24-02) am
 Wight & Company 2017 All rights reserved. No part of these documents may be reproduced, stored, or transmitted in any form or by any means, electronic, mechanical, photocopying, recording or otherwise, without the prior written consent of Wight.



Wight
 Wight & Company
 wightco.com
 2500 North Frontage Road
 Darien, IL 60551
 P 630.969.7900
 F 630.969.7979

ANTIOCH SCHOOL DISTRICT 34
 964 SPAFFORD STREET
 ANTIOCH, IL 60002
 (847) 838-8400
 (847) 838-8404

100% CD 01-15-17
 REV DESCRIPTION DATE
**OAKLAND
 ELEMENTARY SCHOOL**

818 GRASS LAKE ROAD
 LAKE VILLA, IL 60046

OVERALL LANDSCAPE
 PLAN

Project Number:
 5405-24
 Drawn By:
 LR
 Sheet:

L1.00

W.C. Petty Elementary School

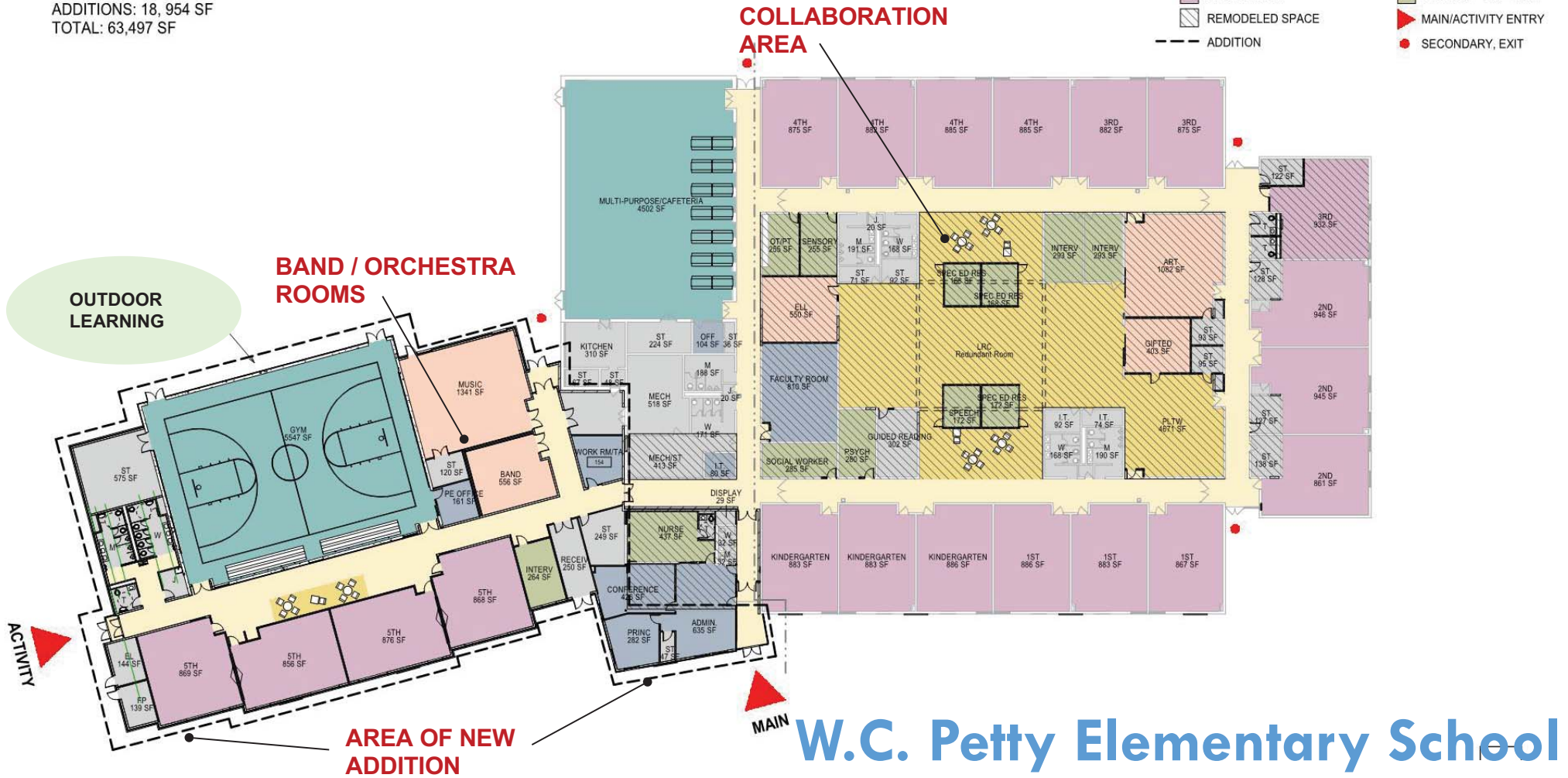
FLOOR AREA

EXISTING: 44,543 SF
ADDITIONS: 18,954 SF
TOTAL: 63,497 SF

LEGEND

- ADMINISTRATION
- ASSEMBLY
- CIRCULATION
- CLASSROOM
- REMODELED SPACE
- ADDITION

- CO-CURRICULAR CLASS
- COLLABORATIVE AREA
- INFRASTRUCTURE
- STUDENT SUPPORT
- MAIN/ACTIVITY ENTRY
- SECONDARY, EXIT











Multiple Color Option





Without Graphic Wall Panels



W.C. PETTY - EAST VIEW - OPTION C



W.C. PETTY - SE VIEW - OPTION C

Oakland Elementary School

FLOOR AREA

EXISTING: 36,000 SF
ADDITIONS: 35,186 SF
TOTAL: 71,186 SF

LEGEND

- | | |
|-----------------|-------------------------|
| ADMINISTRATION | CO-CURRICULAR CLASSROOM |
| ASSEMBLY | COLLABORATIVE AREA |
| CIRCULATION | INFRASTRUCTURE |
| CLASSROOM | STUDENT SUPPORT |
| REMODELED SPACE | ▶ MAIN/ACTIVITY ENTRY |
| --- ADDITION | ● SECONDARY, EXIT |

AREA OF NEW ADDITION

BAND / ORCHESTRA ROOM

OUTDOOR LEARNING

COLLABORATION AREA



Oakland Elementary School















Updated Entry and Color









