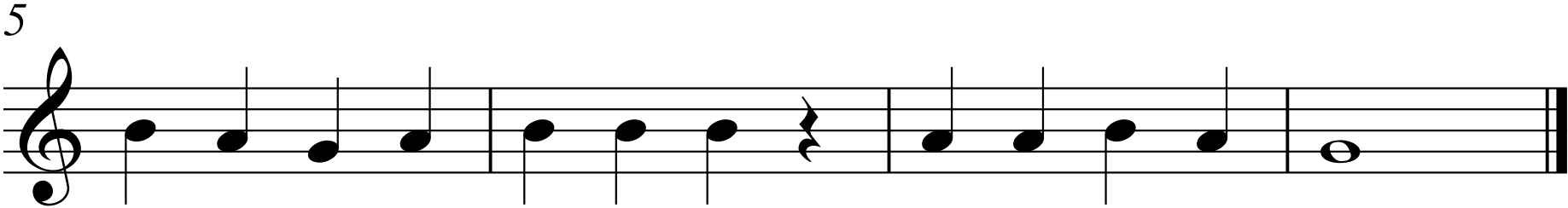
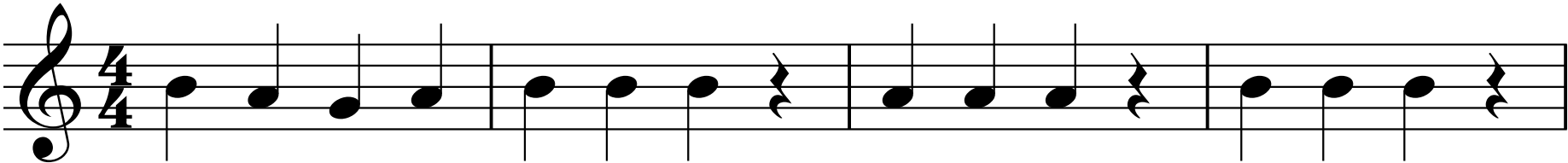
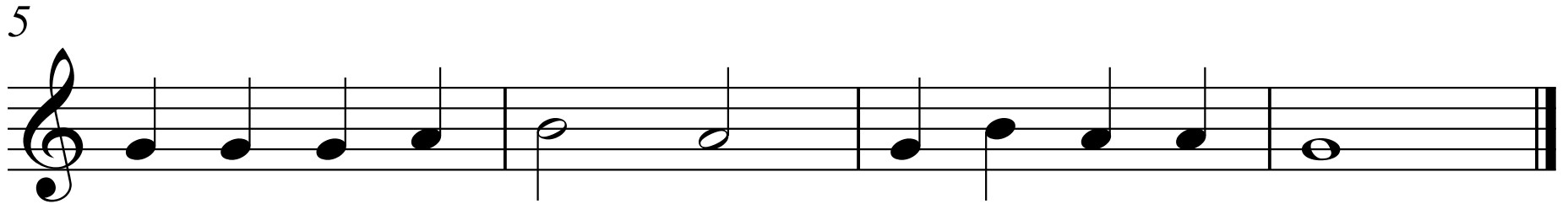
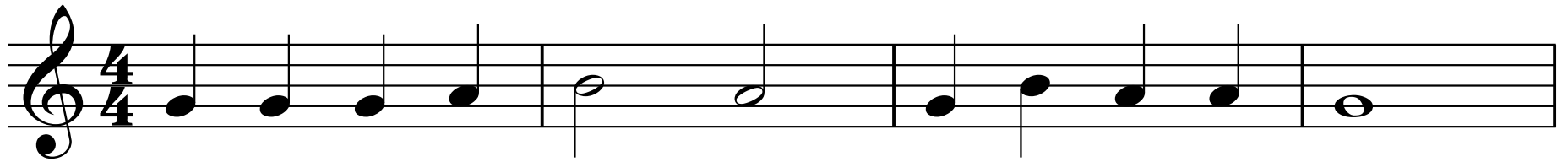


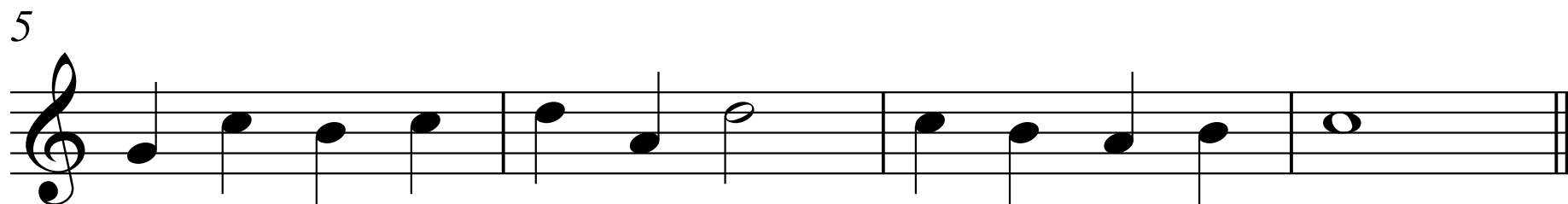
Merrily We Roll Along (White Belt)



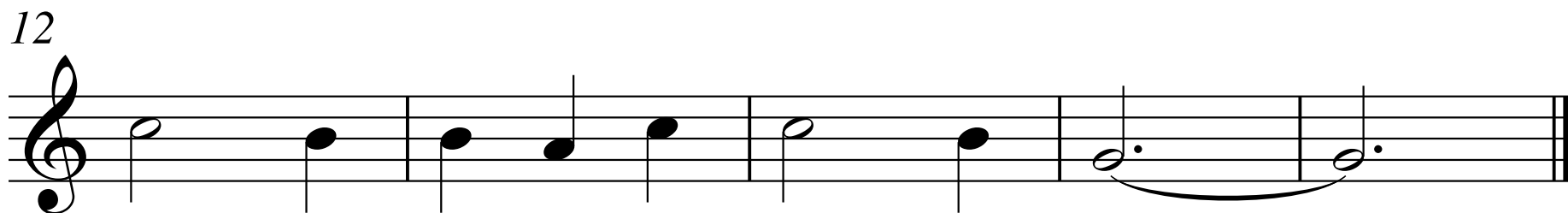
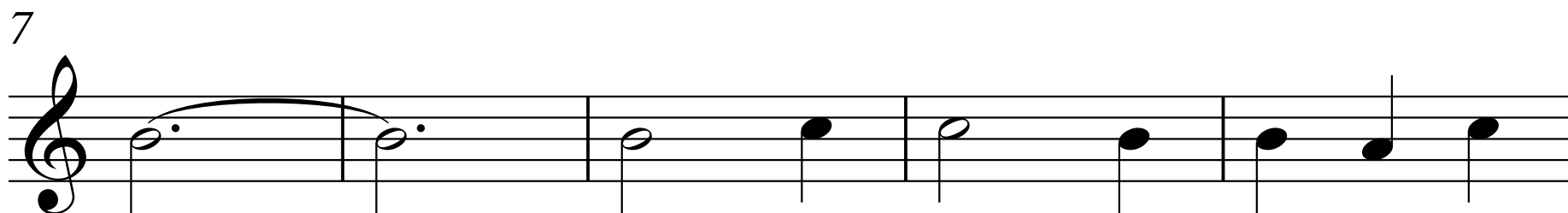
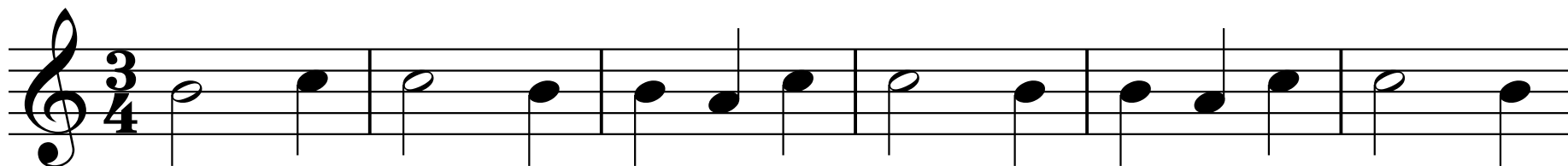
Au Claire de la Lune



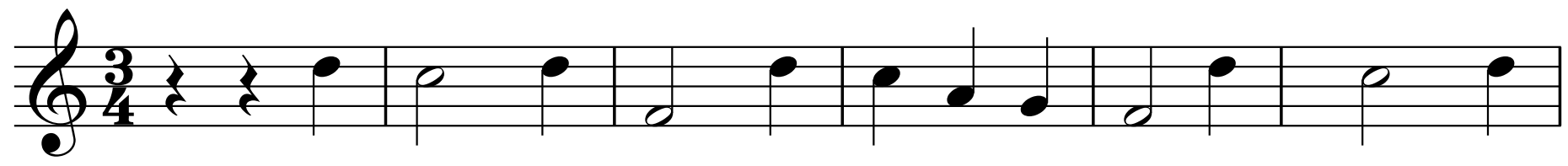
Aura Lee (Orange Belt)



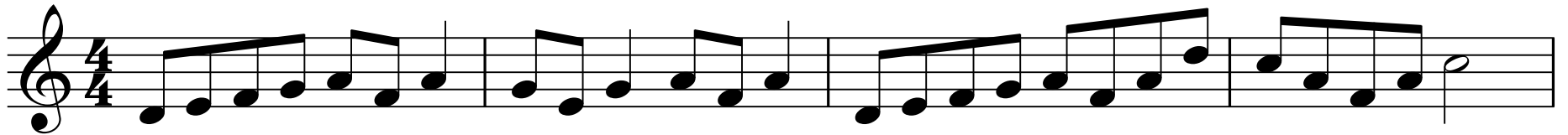
Barcarolle (Green Belt)



Goodbye Old Paint (Purple Belt)



Hall of the Mountain King (Blue Belt)



This Old Man (Red Belt)

S. Rec.

Musical notation for the first staff, labeled "S. Rec.", in 4/4 time. The melody consists of the following notes: G4 (quarter), A4 (quarter), B4 (quarter), C5 (half), D5 (quarter), E5 (quarter), F5 (quarter), G5 (half), A5 (quarter), B5 (quarter), C6 (half), D6 (quarter), E6 (quarter), F6 (quarter), G6 (half), A6 (quarter), B6 (quarter), C7 (half). There are sharps on the notes A4, B4, F5, G5, D6, E6, F6, and A6.


5
S. Rec.

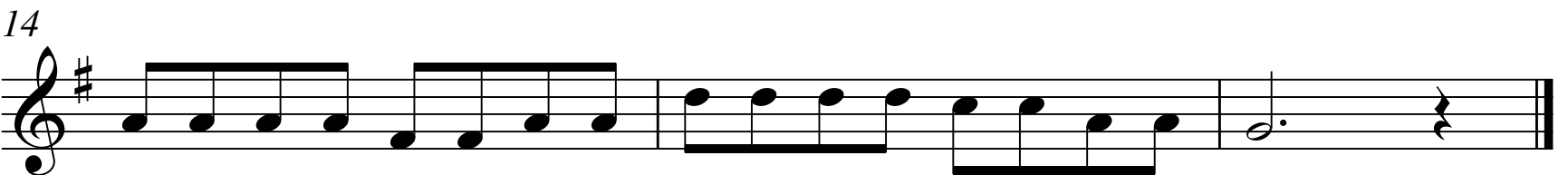
Musical notation for the second staff, labeled "S. Rec.", with a finger number "5" above the first note. The melody consists of the following notes: G4 (quarter), A4 (quarter), B4 (quarter), C5 (quarter), D5 (quarter), E5 (quarter), F5 (quarter), G5 (half), A5 (quarter), B5 (quarter), C6 (half), D6 (quarter), E6 (quarter), F6 (quarter), G6 (half), A6 (quarter), B6 (quarter), C7 (half). There are sharps on the notes F5, G5, D6, E6, F6, and A6.

Polly Wolly Doodle (Brown Belt)

S. Rec.  This staff begins with a treble clef, a key signature of one sharp (F#), and a 4/4 time signature. The melody consists of eighth and quarter notes, with some beamed eighth notes in the later measures.

5
S. Rec.  This staff starts with a measure rest labeled '5'. The melody continues with eighth and quarter notes, including some beamed eighth notes.

10
S. Rec.  This staff starts with a measure rest labeled '10'. The melody continues with eighth and quarter notes, including some beamed eighth notes.

14
S. Rec.  This staff starts with a measure rest labeled '14'. The melody continues with eighth and quarter notes, including some beamed eighth notes, and ends with a double bar line.

Oh, Susanna! (Black Belt)

S. Rec.

Musical notation for the first staff of the song, starting with a treble clef, a key signature of one flat (Bb), and a 4/4 time signature. The melody begins with a quarter note G4, followed by a quarter note A4, a quarter note Bb4, and a quarter note C5. A repeat sign follows, then a quarter note Bb4, a quarter note A4, a quarter note G4, and a quarter note F4. The melody continues with a quarter note E4, a quarter note D4, a quarter note C4, and a quarter note B3. The staff ends with a quarter note A3, a quarter note G3, and a quarter note F3.

5

S. Rec.

Musical notation for the second staff of the song, starting with a treble clef, a key signature of one flat (Bb), and a 4/4 time signature. The melody begins with a quarter note Bb4, a quarter note A4, a quarter note G4, and a quarter note F4. The melody continues with a quarter note E4, a quarter note D4, a quarter note C4, and a quarter note B3. The staff ends with a quarter note A3, a quarter note G3, and a quarter note F3. A first ending bracket labeled "1." spans the final two measures of the staff.

9

S. Rec.

Musical notation for the third staff of the song, starting with a treble clef, a key signature of one flat (Bb), and a 4/4 time signature. The melody begins with a quarter note Bb4, a quarter note A4, a quarter note G4, and a quarter note F4. The melody continues with a quarter note E4, a quarter note D4, a quarter note C4, and a quarter note B3. The staff ends with a quarter note A3, a quarter note G3, and a quarter note F3. A second ending bracket labeled "2." spans the first two measures of the staff.

14

S. Rec.

Musical notation for the fourth staff of the song, starting with a treble clef, a key signature of one flat (Bb), and a 4/4 time signature. The melody begins with a quarter note Bb4, a quarter note A4, a quarter note G4, and a quarter note F4. The melody continues with a quarter note E4, a quarter note D4, a quarter note C4, and a quarter note B3. The staff ends with a quarter note A3, a quarter note G3, and a quarter note F3.